

DRAWING MADE IN THIRD ANGLE PROJECTION
 THIS DRAWING IS UNPUBLISHED. RELEASED FOR PUBLICATION MARCH 17, 1983.
 © COPYRIGHT 1975 BY AMP INCORPORATED, HARRISBURG, PA. ALL INTERNATIONAL RIGHTS RESERVED. AMP PRODUCTS MAY BE COVERED BY U.S. AND FOREIGN PATENTS AND/OR PATENTS PENDING.

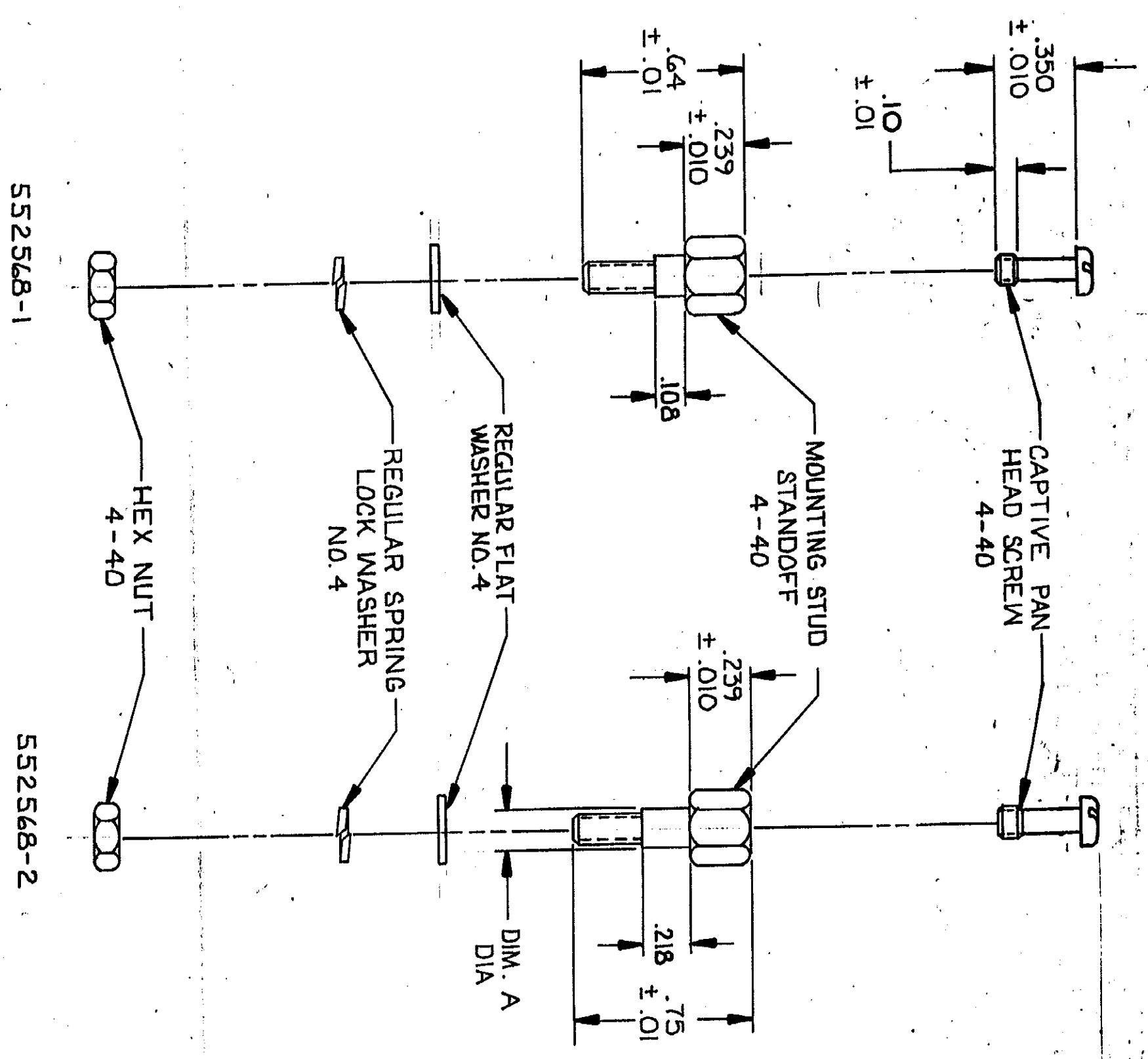
3

2

Loc DIST
AA 20

REV	ZONE	DESCRIPTION	DATE	APPROVED
1	F	REV. ECN. AA-5071	2/28/83	[Signature]

- TWO (2) REQUIRED OF EACH COMPONENT PER KIT.
- MATERIAL: MOUNTING STUD & SLOTTED MOUNTING STUD - ZINC PLATE WITH YELLOW CHROMATE OVER STEEL. PAN HEAD SCREW, LOCKWASHER, WASHER & HEX NUT - ZINC PLATED STEEL.



UNLESS OTHERWISE SPECIFIED DIMENSIONS ARE IN INCHES. TOLERANCES ON: DECIMALS ±.005 ANGLES		CONTRACT NO. 3-17-83	
MATERIAL		DR. LARRY K. SMITH	DATE 6/1/83
FINISH		CHK. M. J. [Signature]	4-7-83
APPD. [Signature]		APPD. [Signature]	6/1/83
DSGN APPD. [Signature]		APPD. [Signature]	6/1/83
OTHER APPD. [Signature]			
NAME: AMP INCORPORATED, HARRISBURG, PA. 17105		SIZE: C	FSCM NO: 00779
HARDWARE KIT, SCREW LOCK, PANEL MOUNT, CHAMP		DRAWING NO: 552568	SHEET 1 OF 1
SCALE: 2:1			

AMP 1471-6 REV 2-81

CUSTOMER DRAWING

552568